



CHINA IN PRACTICE: *Nursing Across Cultures, Systems and Traditions*

A Land-based Study Tour of China

12th to 21st April 2027

China



EDUCATION *at* SEA



**NURSES FOR
NURSES
NETWORK**

02 7908 7774

enquiries@educationatsea.com.au

www.educationatsea.com.au



SYNOPSIS:

This ten day study tour offers you a rare opportunity to step outside your usual healthcare environment and experience service delivery through a completely different cultural and system lens. Combining structured education with immersive site visits, participants will explore how services are provided in the Chinese health system.

You will see how services are organised, how patients move through the system, and how decisions are made when demand is high.

You will also see how traditional and contemporary care sit alongside each other and how that shapes what patients expect and accept. It is something you really need to see to understand.

There is time to ask questions, talk with local clinicians, and get a better sense of how and why things are done the way they are.

The accompanying six-hour conference series is designed to make sense of what participants are seeing in real time. Sessions focus on translating observations into clinical insight, examining differences in professional roles, decision-making, communication, and patient expectations. Rather than passive learning, the program encourages critical reflection, comparison with Australian standards, and identification of practical strategies that can inform and strengthen nursing practice back home.



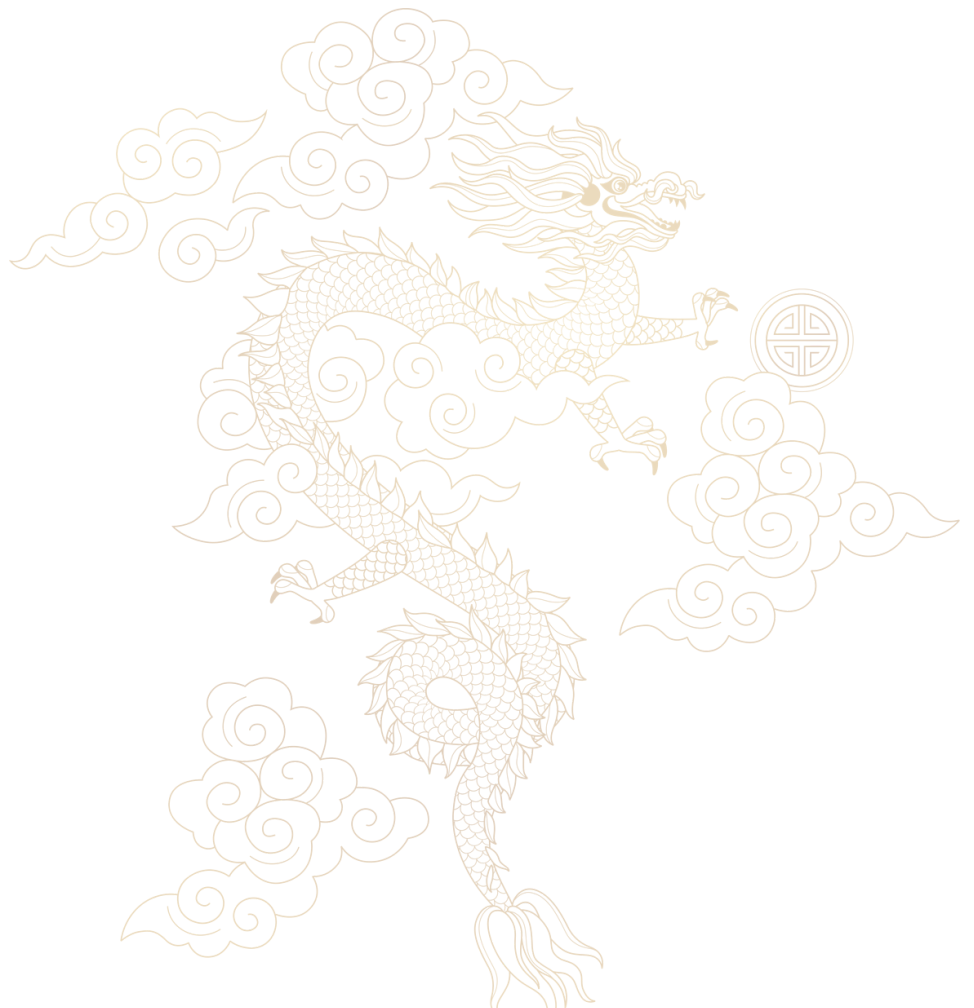
This is not about adopting another system. It is about understanding it, questioning our own, and returning with sharper clinical awareness and broader professional perspective.

Learning outcomes:

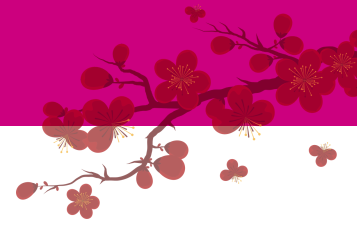
By the end of this program, participants will be able to:

- Critically compare key differences between Australian healthcare systems and those observed in Chinese health care settings
- Analyse how cultural beliefs and values influence patient expectations, treatment choices, and engagement with healthcare services
- Identify the role and integration of traditional Chinese medicine within contemporary healthcare delivery and its implications for nursing practice
- Translate international observations into practical insights that can inform clinical decision-making, communication, and patient-centred care in the Australian context

CPD HOURS: 28



PRESENTER:



Sue Walker

RN, BN, BN (ADMIN), MPH (PALCARE), MACN Specialist
Nurse Educator

Sue is the director and co-founder of the Nurses for Nurses Network. Sue is a key contributor to the online education platform Nursing CPD – a Continuing Professional Development platform to assist Nurses in meeting their annual CPD requirements.

As a Registered Nurse, Sue holds Degrees in both Nursing and Health Administration, a Master's Degree in Public Health, as well as a number of certificate courses in Psychiatry of Ageing, Gerontology, Chemotherapy Administration, and Training and Assessment. She is also an Accredited Mental Health First Aid Trainer, Mindfulness Practitioner, and Clinical Supervisor.

Sue has extensive experience as a clinician, educator, and senior manager. She has presented at local and international conferences on many topics including, key issues in healthcare, such as the psychological impact of the work that Nurses do and how the work requirements to deliver healthcare impact the health of the clinician. Other topics presented comprise of Nursing Leadership, Emergency Management, Mental health, Aged Care, Advanced Life Support, Assertiveness, Grief and Loss, and Workplace Bullying.

Sue is passionate about making a difference in how the community and Nurses experience the healthcare system.

“Nurses are the backbone of the healthcare system and work in difficult environments that can take advantage of their commitment to ensuring the best possible care is delivered. To continue to meet professional and community expectations Nurses and Midwives need to acknowledge their unique contribution to health care delivery and assert their collective strength to safeguard the community and ensure their ongoing professional needs are recognised and met.”

Healthcare should be delivered by competent, knowledgeable individuals to ensure the best possible experience for the recipient of that care. Nursing is a fabulous profession. The knowledge and skill of the individual Nurse will have the greatest influence on the happiness and health outcomes of each and every client”.



EDUCATION *at* SEA



NURSES FOR
NURSES
NETWORK



02 7908 7774

enquiries@educationatsea.com.au

OUR CONVENOR:



Jason Dawson

BNSc

Jason Dawson is from the Gold Coast, Queensland. Whilst studying his Bachelor of Nursing at Southern Cross University he developed an interest in mental health and has worked in this field of nursing for many years since completing his studies in 2008.

In this time, Jason has undertaken varied roles including Acute Inpatient Nursing, Community Nursing, clinical facilitating and Nurse Unit Manager positions.

In 2012, Jason combined his passion for nursing with his love of travel and founded CPD Cruise Pty Ltd with the view to providing Nurses the opportunity to update and improve their skills in diverse and unique locations.

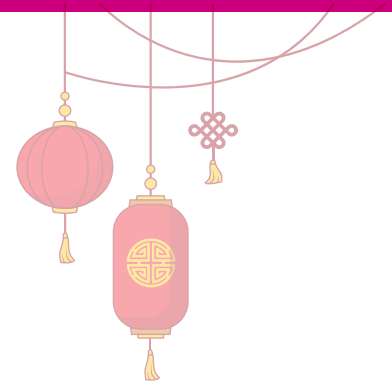




INCLUSIONS:

TOUR INCLUSIONS:

- 5* Accommodation including breakfast
- Meals as stated in the programme
- All entrance fees, as mentioned in the programme
- Bullet train ticket:Beijing-Xi'an
- Airline ticket: Xi'an-Shanghai,Economy Class
- Tipping for tour guides and drivers



PROGRAM INCLUSIONS:

- An extensive program based on current best practice
- Dedicated Space for expert presentations and reflection
- Coffee breaks and lunches on presentation days
- Education content that meets the same exacting standards as anything offered in an Australian program
- Presenters that are excited to be able to share their skill, knowledge, and passion
- An online library filled to the brim with educational content that allows you to create your own learning experience
- A Registration Reception including complimentary drinks where you can meet other Attendees and network with Convenors and Presenter/s
- A Transcript reflecting all education sessions, presentations and hospital/health centre site visits
- A Certificate of Completion identifying the CPD hours attached to the Program for you to include in your CPD Evidence Portfolio





FULL ITINERARY:

DAY 1:

Monday, 12th April 2027

Beijing New Century
Hotel

Inclusions:

Drinks reception

Arrive in Beijing – Welcome to China!

Check into your accommodation Beijing New Century Hotel, located in Beijing's Haidian District, the hotel is within easy reach of attractions such as the Beijing Zoo, Purple Bamboo Park, and the historic Summer Palace.

After checking in, take some time to relax and unwind following your journey. The hotel offers a range of facilities including an indoor swimming pool, fitness centre and wellness services. You may wish to enjoy a massage, take a refreshing swim, or simply relax with a drink in the hotel lounge.

5pm to 6pm: Complimentary Welcome registration function

DAY 2:

Tuesday 13th April 2027

Beijing New Century
Hotel

Inclusions:

Breakfast & Dinner

CPD Hours: 6

4 hours CPD activities

2 hours via online library

7am to 8am: Breakfast

8.30am to 11am: Conference

In this session we will investigate how health care is delivered in China from the broadest policy framework to how individuals utilise the healthcare system when they need to.

We will explore how Nursing education is provided and the diverse roles that Nurses play within the various levels of the health care system.



EDUCATION *at* SEA



NURSES FOR
NURSES
NETWORK



02 7908 7774

enquiries@educationatsea.com.au



The online library for this study tour also houses a number of activities to support your understanding of health care delivery in this vast, culturally diverse, and exciting country.

11.15am to 12.15pm: Transfer from hotel to Tiananmen Square

Following the conference, depart for a guided exploration of some of Beijing's most iconic landmarks.

12:30pm to 1.30pm: Visit Tiananmen Square

The largest public square in China and one of the most historically significant sites in the country, Tian'anmen Square has been the setting for many important moments in Chinese history and offers impressive views of the surrounding government buildings and monuments.

1.30pm to 5.30pm: Visit the Forbidden City

The Forbidden City (closed Mondays) is the world's largest and best-preserved ancient imperial palace complex. Once home to Chinese emperors and their royal courts for more than 500 years, this vast complex contains thousands of halls, palaces and courtyards filled with priceless artworks and historical treasures, providing fascinating insight into the lives of China's imperial rulers.

4pm to 5pm: Visit Traditional Chinese Medicine Rehabilitation Centre (Tong Ren Tang)

One of China's most famous traditional medicine institutions, Tong Ren Tang has been producing herbal medicines since the Qing Dynasty. During your visit you will gain an introduction to Traditional Chinese Medicine, including the use of herbal remedies, natural therapies and rehabilitation practices that have been used in Chinese healthcare for centuries.

6pm to 7.30pm: Dinner

Enjoy a traditional Peking Roast Duck dinner — one of Beijing's most famous culinary experiences and a must-try dish when visiting the capital.



DAY 3:

Wednesday, 14th April
2027

Beijing New Century
Hotel

Inclusions:

Breakfast
Lunch

CPD hours: 3

3 hours via online library

**7am to 8am: Breakfast****9.30am to 11.30am: Juyongguan Pass of the Great Wall of China**

Travel to the historic Juyongguan section of the Great Wall, located in a dramatic valley approximately 50 kilometres from Beijing. This strategic mountain pass has protected the capital for centuries and is considered one of the three most important passes of the Great Wall, along with Jiayuguan and Shanhai Pass. Originally constructed during the Qin Dynasty under Emperor Qin Shi Huang, this remarkable structure stands as one of the most impressive engineering achievements in human history. Take time to walk along the ancient stone ramparts and admire the sweeping views of the surrounding mountains.

12pm to 1pm: Enjoy a Chinese buffet lunch at a local restaurant**1pm to 1.40pm: Visit a Jade Carving Museum / Factory**

Stop at a traditional jade carving workshop where you will learn about the cultural significance of jade in Chinese history. Jade has long been regarded as a symbol of purity, prosperity and protection in Chinese culture. Observe skilled artisans at work and browse a variety of jade carvings and handicrafts.

3pm to 5pm: Visit the Summer Palace

This afternoon explore the magnificent Summer Palace, the largest and best-preserved imperial garden in China. Originally built as a royal retreat where emperors could escape the summer heat of Beijing, the palace complex features beautiful lakes, elegant pavilions and landscaped gardens. During the 19th century, the powerful Empress Dowager Cixi undertook extensive renovations, restoring many of the structures that can still be seen today. Enjoy a relaxing walk through the gardens while taking in views over Kunming Lake and Longevity Hill.



EDUCATION *at* SEA



NURSES FOR
NURSES
NETWORK



02 7908 7774

enquiries@educationatsea.com.au

DAY 4:

Thursday, 15th April 2027

Titan Times Hotel

Inclusions:

Breakfast

Lunch

CPD hours: 3

3 hours via online library

This morning, check out from the Beijing New Century Hotel before continuing your exploration of Beijing's cultural highlights.

7am to 8am: Breakfast

9am to 10.15am: Visit the Temple of Heaven

Built in 1420 during the Ming Dynasty, the Temple of Heaven is one of Beijing's most remarkable architectural and spiritual landmarks. Chinese emperors, who referred to themselves as the "Sons of Heaven," came here to perform sacred ceremonies and pray for good harvests. The stunning Hall of Prayer for Good Harvests, with its striking blue-tiled roof, remains one of the most iconic structures in Beijing.

11am to 12.30pm: Lunch

Visit a local family in a traditional courtyard home. Learn how to make Chinese dumplings together with a family member and enjoy them for lunch.

3.05pm to 7.25pm: High-speed bullet train from Beijing to Xi'an

Travel in comfort aboard one of China's modern high-speed trains, covering the distance between the two historic cities in just a few hours.

Upon arrival, meet your local guide and transfer to your hotel.

8.15pm: Arrive at your hotel

Check in at the Titan Times Hotel and enjoy the evening at leisure.



DAY 5:

Friday, 16th April 2027

Titan Times Hotel

Inclusions:

Breakfast
Dinner
Show

CPD hours: 6

3 hours face to face
3 hours online library



8am to 9am: Breakfast

9.30am to 10.30am: Visit the Xi'an City Wall

Begin the day exploring one of Xi'an's most iconic landmarks. The Ancient City Wall is the largest and best-preserved ancient city defence system in China. Originally built during the Ming Dynasty, the impressive structure surrounds the historic centre of Xi'an and offers insight into the city's military and architectural history.

11am to 12.30pm: Explore Xi'an Bell Tower, Xi'an Drum Tower and Xi'an Muslim Quarter

Continue to Drum and Bell Tower Square, the vibrant heart of Xi'an's historic district. From here, enjoy a walk through the famous Muslim Quarter Food Street, a lively area filled with traditional architecture, bustling market stalls and local restaurants. The street stretches for around 500 metres and is home to many Hui Muslim families who have lived in Xi'an for generations, creating a unique blend of Chinese and Muslim culture.

1.30pm to 3.30pm: Visit a Local Community Hospital

Spend the afternoon visiting a local community hospital where you will have the opportunity to learn about healthcare delivery at the community level in China. During this visit you will meet local medical staff and gain insights into the services provided within the community healthcare system.

5.30 to 6.30pm: Dumpling Banquet Networking Dinner

Enjoy one of Xi'an's most famous culinary traditions — a traditional dumpling banquet featuring a variety of beautifully crafted dumplings with different fillings and shapes.

7pm to 8pm: Tang Dynasty Music and Dance Show

Experience a spectacular cultural performance showcasing music, costumes and dance inspired by the prosperous Tang Dynasty, one of the most celebrated periods in Chinese history.



EDUCATION *at* SEA



NURSES FOR
NURSES
NETWORK



02 7908 7774

enquiries@educationatsea.com.au

DAY 6:Saturday, 17th April 2027

Titan Times Hotel

Inclusions:

Breakfast

Lunch

CPD Hours: 3

3 hours via online library

7am to 8am: Breakfast**9.15am to 11.30am: Visit the Terracotta Army**

This morning travel to one of China's most remarkable archaeological discoveries. The Terracotta Army, discovered in 1974, is considered one of the most significant archaeological excavations of the 20th century. Thousands of life-sized terracotta warriors, horses and chariots stand in carefully arranged battle formations, created to guard the tomb of China's first emperor, Qin Shi Huang, in the afterlife. Each figure is uniquely detailed, making this extraordinary site a highlight of any visit to China.

12pm to 1pm: Chinese lunch at a local restaurant**1pm to 2pm: Visit a Terracotta Workshop**

After lunch, visit a local workshop where artisans demonstrate the traditional techniques used to recreate miniature terracotta warriors. This is a great opportunity to learn more about the craftsmanship behind these famous figures.

3pm to 4.30pm: Visit the Giant Wild Goose Pagoda

Return to Xi'an to visit the iconic Big Wild Goose Pagoda, located within the historic Da Ci'en Temple complex. Built during the Tang Dynasty, the pagoda was originally constructed to house sacred Buddhist scriptures brought back to China from India. Today it remains one of Xi'an's most recognisable landmarks and an important symbol of the city's deep Buddhist heritage.



DAY 7:Sunday, 18th April 2027

Sunrise on the Bund

Inclusions:

Breakfast

CPD hours: 3

3 hours via online library

Xi'an Shanghai**8am to 9am: Breakfast at the hotel**

Enjoy the morning at leisure before your transfer to the airport.

Free time may be spent relaxing at the hotel or taking a short walk nearby before departing for your next destination.

1pm to 3pm: Flight from Xi'an to Shanghai

Transfer to Xi'an Airport for your flight to Shanghai (approximately 2 hours).

Upon arrival, meet your local guide and transfer to your hotel.

5pm: Check in at the Sunrise on the Bund

Located near Shanghai's famous Bund waterfront, the hotel blends classic Shanghai architecture with modern luxury. After check-in, enjoy the remainder of the evening at leisure — the perfect opportunity to relax or explore the vibrant surroundings of one of China's most exciting cities.

DAY 8:Monday, 19th April 2027

Sunrise on the Bund

Inclusions:

Breakfast

CPD Hours: 3

3 hours via online library

8am to 9am: Breakfast**FREE DAY TO EXPLORE SHANGHAI**EDUCATION *at* SEANURSES FOR
NURSES
NETWORK

02 7908 7774

enquiries@educationatsea.com.au

DAY 9:

Tuesday, 20th April 2027

Sunrise on the Bund

Inclusions:

Breakfast

CPD hours: 1

1 hour face to face



7am to 8am: Breakfast

9.15am to 11am: Visit the Shanghai Museum

Begin the day with a visit to the Shanghai Museum, one of the most important museums in China. Home to more than 120,000 pieces of Chinese art and cultural relics, the museum is especially renowned for its exceptional collections of ancient bronzes, ceramics, paintings and calligraphy, offering a fascinating insight into China's rich artistic heritage.

12pm to 1.30pm: Explore Shanghai Old Town (Chenghuang Market)

Shanghai's Old Town is famous for its lively streets, traditional architecture and vibrant local markets. As you wander through the bustling lanes, you will have the opportunity to sample authentic Shanghai street food and local specialties. Lunch is not arranged today as there are many delicious snacks to enjoy throughout the market, and your guide will be happy to recommend some local favourites.

2.15pm to 4.15pm: Stroll along Nanjing Road

Continue to Nanjing Road, one of the most famous shopping streets in China. With more than 600 businesses, the area offers countless well-known brands, boutiques and department stores, making it one of the busiest commercial streets in the world.

4.30pm to 5.15pm: Walk along The Bund

Enjoy a walk along Shanghai's iconic waterfront promenade along the Huangpu River. The Bund is famous for its impressive row of historic buildings dating back to the 1930s, many of which were constructed during the era of the foreign concessions and reflect a blend of architectural styles.

6pm to 7pm: Farewell dinner & Study Tour conclusion

7.30pm to 8pm: Visit the Shanghai World Financial Center

Travel to the observation deck of the Shanghai World Financial Center for a spectacular bird's-eye view of the city. From high above the skyline, enjoy panoramic views of Shanghai's dazzling night lights and the futuristic towers of Pudong.



DAY 10:

Wednesday, 21st April
2027

Sunrise on the Bund

Inclusions:

Breakfast

We say our final goodbyes – Safe travels!



EDUCATION *at* SEA



NURSES FOR
NURSES
NETWORK



02 7908 7774

enquiries@educationatsea.com.au



EXCLUSIONS:

- Airfares to and from China
- Personal travel insurance
- Arrival & Departure Transfers to and from the Airport
- All other meals not mentioned in the itinerary
- Personal expenses such as alcoholic and other beverages, telephone calls and laundry
- Personal expenditure, such as drinks, souvenirs, laundry, camera fees, communications, postage, gratuities etc.
- Early check-in and late check-out
- Departure airport transfer
- Any other services not mentioned above

COST:

Twin Share	\$3925 per person
Single Supplement	\$795



INTERNATIONAL FLIGHTS & TRAVEL INSURANCE:

We're happy to provide airfare quotes for any of your travel needs—completely obligation-free.

Booking your flights and travel insurance through Travel Direct Australia / Education At Sea means everything is organised in one place for your convenience. It also allows all associated travel expenses to appear on a single statement, making things simpler at tax time.

We strongly recommend arranging travel insurance at the time of booking to ensure you're covered from the outset.

